



KEEP YOUR EYES ON THE ROAD



KEEP YOUR EYES ON THE ROAD

How to prevent risk when driving for AitemConnect

Driving is not an easy task as it necessarily requires one's full attention on how to stay safe despite distractions which arise while the steering wheel is in your hands and your car is on the road.

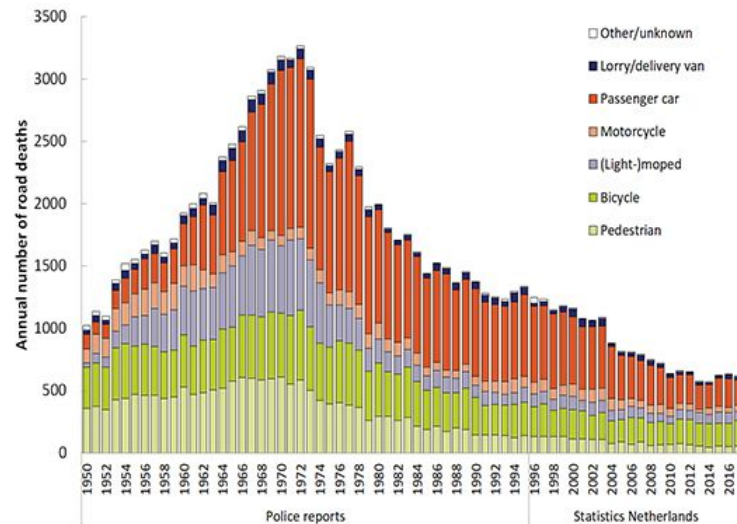
As an **AitemConnect** driver, your safety is of utmost importance to us. We believe your drivers should have at least two (2) years of driving experience and must hold a valid Driver's license of the residing state. Please do not have any other passengers accompany you in your vehicle while making deliveries. Passengers in the vehicle while making deliveries for AitemConnect are prohibited.

ALCOHOL AND CONTROLLED SUBSTANCES

We advise you not to drink alcohol or any such substances that could hamper your effectiveness before and while driving for AitemConnect. This directive will result in the overall safety of our drivers.

If you are observed driving in an unsafe manner or driving an unsafe vehicle, **AitemConnect** will be left with no choice but to deactivate your active driving status until you are deemed compliant.

Relative Risk Estimate for Crash or Near Crash - Adult Drivers



AITEMCONNECT BELIEVES IN YOUR UTMOST SAFETY WHILE ON THE ROAD MAKING DELIVERIES



TYPING

A Research Study using Sensors, Eye Trackers & In Car Cameras shows that Texting while Driving is not at all safe.

Texting includes writing sms, reading & replying emails and chatting or posting on Social Media.

These Drivers who take their their eyes off the road and read or write text messages are at 23 times greater risk of getting crashed.



CALLING

The Research based on 1.8 million miles of real life driving data at looking down to dial a handheld device or to make a phone call, substantially increases the risk of drivers getting into a crash by 2.8 times more.



MULTI-TASKING

Drivers are at a 6 times greater risk of getting into a crash when looking down at their mobile device attending to a call without a phone cradle. So get one for your phone right away. The risk increases 3 times more when texting or using social media. Newer drivers are also at a 4 times overall greater risk.

Hence, AitemConnect drivers are strictly prohibited from using mobile devices that's detached from the phone cradle while on the road.

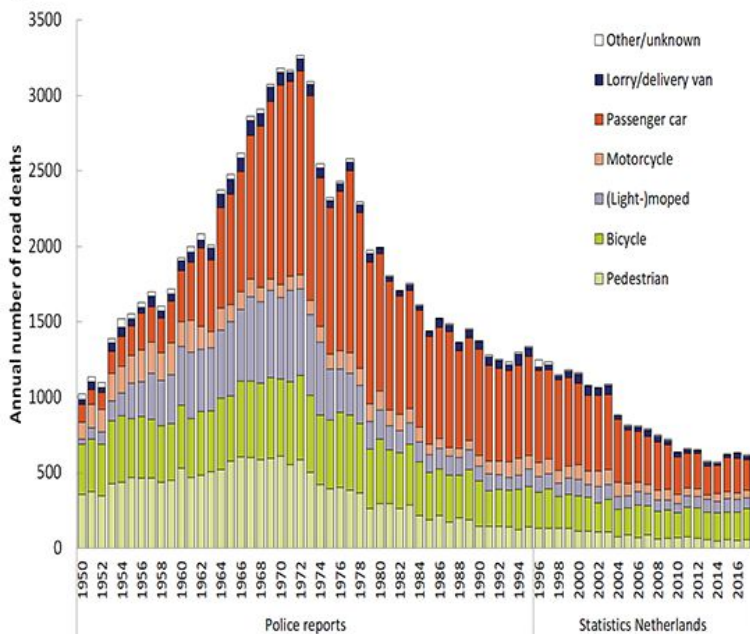


PRECAUTIONS

Talking over mobile devices while driving is however less riskier when on a phone cradle than searching around for it while driving to either receive a call or make one. Looking at the Music Player for adjusting the volume or making other settings as well hold similar risk of getting into a crash without a phone cradle.

Hence that reason why we ask that you get a phone cradle that can be suctioned to your car dashboard while holding your mobile device firmly in place. AitemConnect will reimburse you the cost of this cradle at a future date.

Relative Risk Estimate for Crash or Near Crash - Adult Drivers



HOW TO PREVENT RISK WHEN DRIVING FOR AITEMCONNECT

Some easy and simple steps to be followed by drivers to minimize the threats caused by using mobile devices while driving

Keep Your Eyes On The Road

The latest research indicates clearly that keeping your eyes on the road is the most efficient way to reduce driving risks from the use of mobile phone.

Talking over the mobile devices is not that dangerous when traffic is light and driving conditions are favourable, but what is more dangerous is taking your eyes off the road to dial or answer a call.

Say NO to Text messaging

It's not only illegal but also very risky.

When texting, for 4 seconds interval, drivers take their eyes off the road, with the implication that a driver moving at a of 40mph is not looking at the road for about a football field. This drives the risk of getting into a collision up. It's better to await till the car is parked before you engage in texting activities.



Get A Cradle Installed For Your Phone

AitemConnect rules mandates that drivers are supposed to place their mobile devices in approved cradles affixed to the dashboard so they look at the road ahead and have no need to glance down at it. Drivers can simply glance ahead to decide whether to tap on the screen to accept, reject or simply take no action.

While phones are cradled, drivers can also use handsfree Bluetooth functionalities that greatly reduce risks of getting into collisions.

Use of a handset's speaker is only permissible when the mobile device is in a cradle on the dashboard.

Be a Smart Driver & Use Your Smartphone's Features

Smartphones provide many advanced features such as - voice-activated dialling and automatic answering features.

This reduces the effort of dialling and answering a call and hence allows drivers' eyes to remain on the road all the time. Apps that limit a phone to calling and voice activation can also be installed. Smart drivers use their mobile phones' technology to reduce the dangerous distractions.

Need Not Always Answer a Call

Although use of Hands-free sets of mobile phones while Driving is legal in all States and Territories, yet, this does not mean it's right to use it all the time.

No calls should be made in heavy traffic, in bad weather or in poor road conditions. If a call is not important or you consider it unsafe to answer, don't answer the call then.

Let it divert to an answering service or voicemail.

If you want to make a call, Pull over safely keeping in mind the safety of other vehicles as well.

For more information see
Driving Tips at
AitemConnect Inc

 **(+1) 8479815165**

 **1600 Golf Road, Suite 1200,
Rolling Meadows, IL. 60008**